



## **Looking Forward, Looking Back**

Implementation of the New Master Requirement for GLU Programs

Marilyn Cochran-Smith, Chair, Advisory Panel for Teacher Education

**Looking Back**





Looking Back . . .

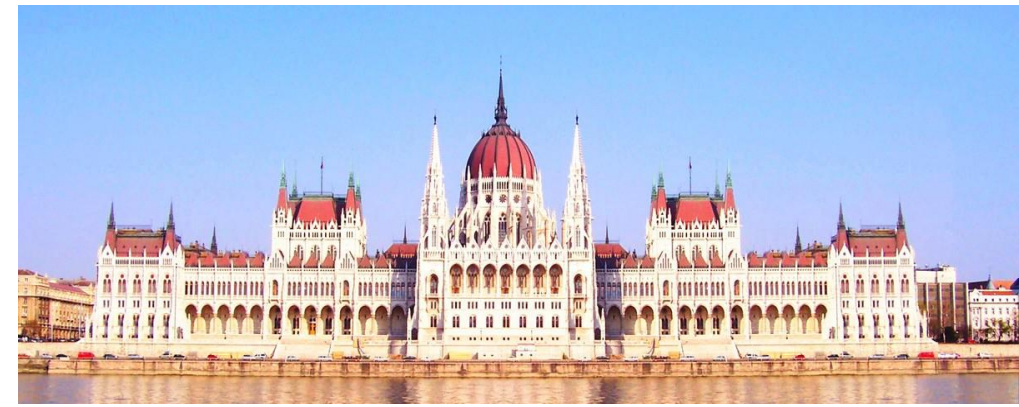
**National Conference on Primary and  
Lower Secondary Teacher Education  
and Practice Schools I**  
February, 2017



## TE's shifting landscape: 5 "turns"

- the policy turn
- the accountability turn
- the practice turn
- the university turn
- the equity turn





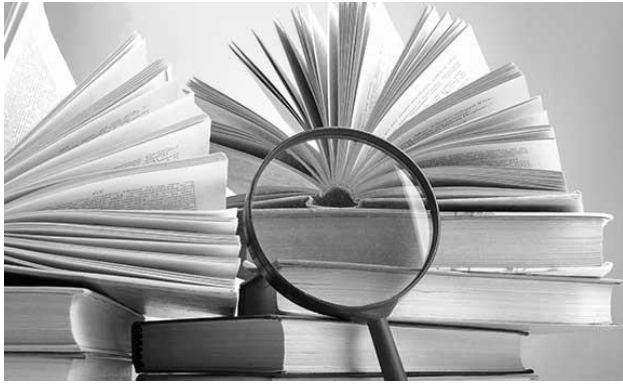
**the policy turn:**  
**implementing the “right” teacher quality  
policies will ensure positive school outcomes  
*and* the economic health of the nation**





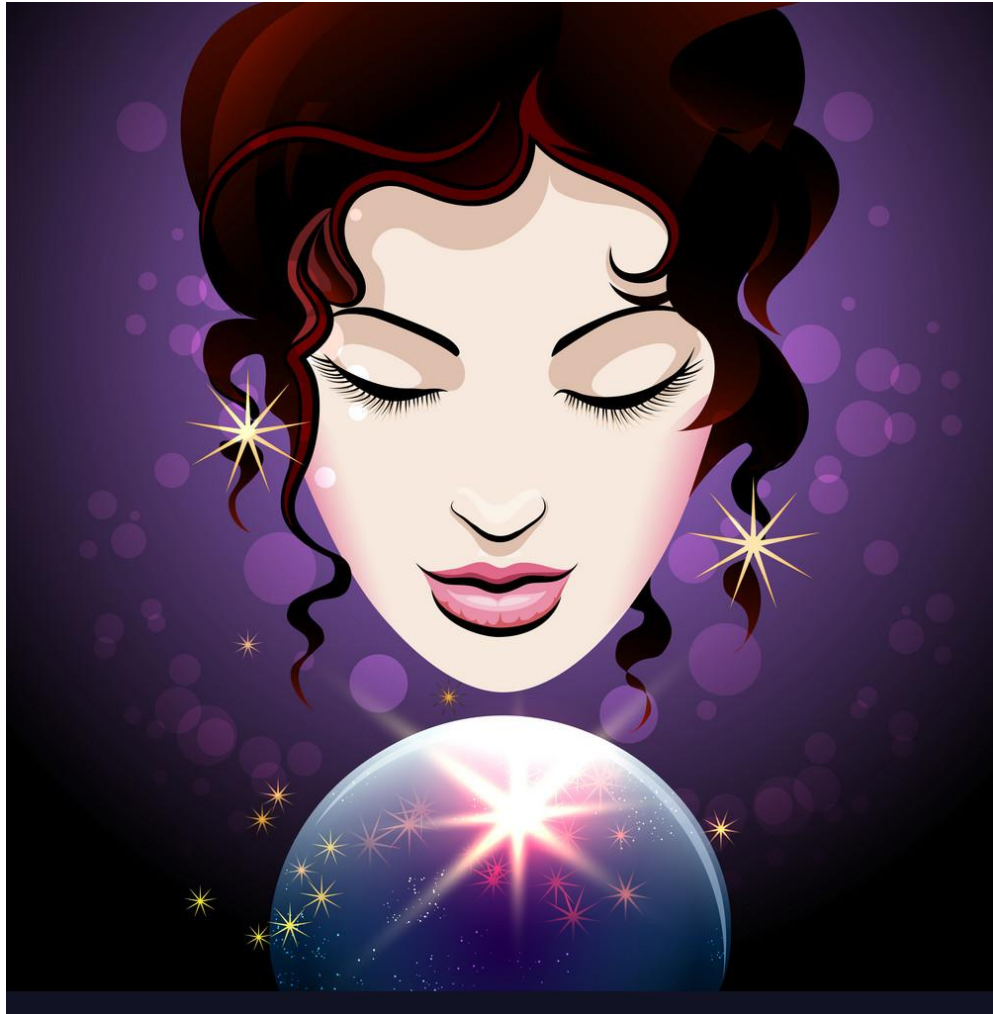
**the practice turn:**  
**increasing emphasis on clinical, school-based, and/or  
practice-based experiences in teacher education**





**the university turn:**  
**increased focus on university**  
**(and research) as the proper location for TE**  
**and the way to improve TE**









**National Conference on Primary and  
Lower Secondary Teacher Education  
and Practice Schools I**  
February, 2017



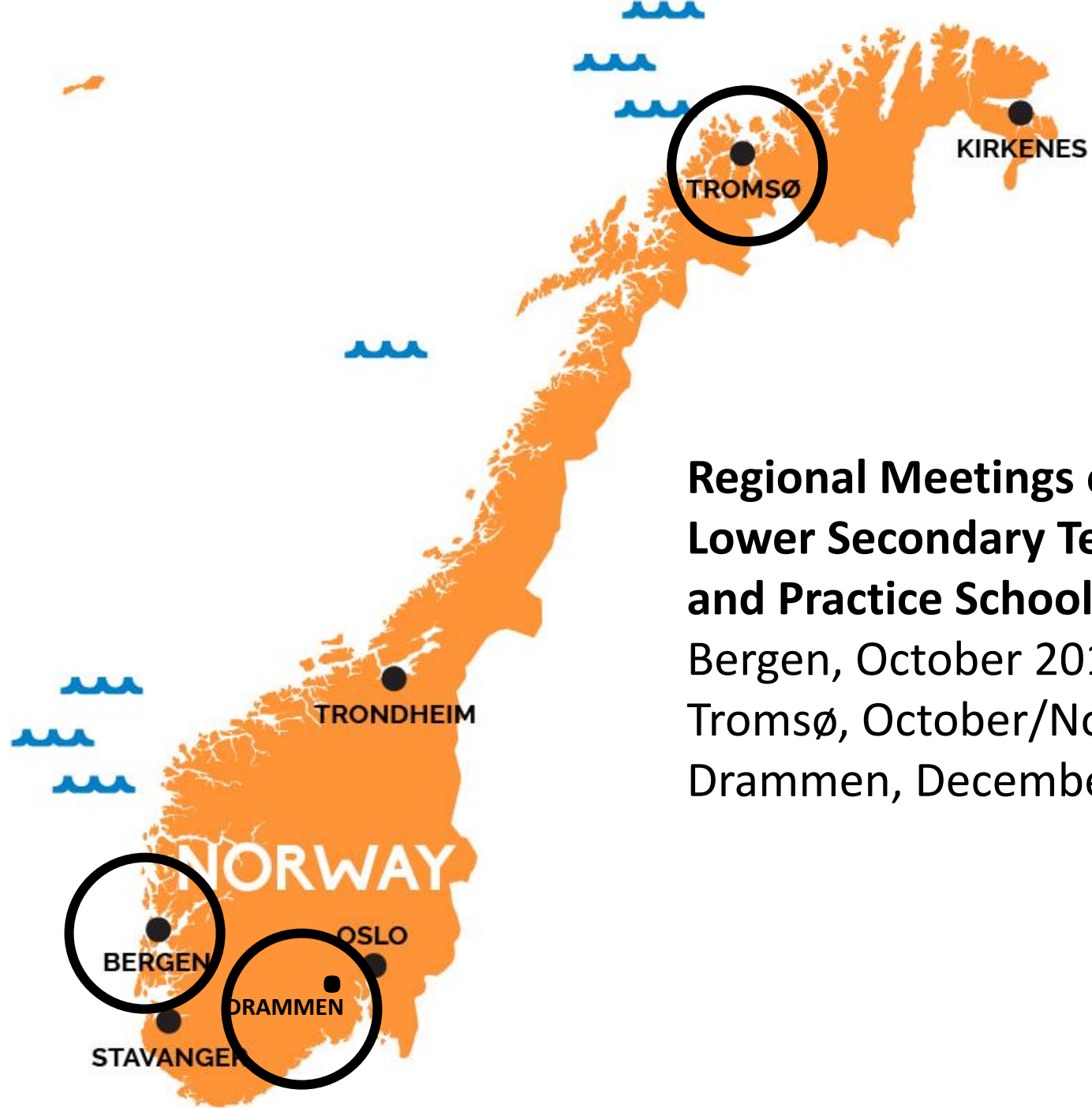
**Looking Back . . .**

**What we've done and what we've found**

the miraculous way



- participatory, collaborative
- inclusive
- agency/empowerment/autonomy-oriented (rather than compliance-oriented)
- context-specific/local
- research-informed *and* practice-informed
- comparative (international)
- critical: identifying structural issues/  
resource needs/leverage points for change

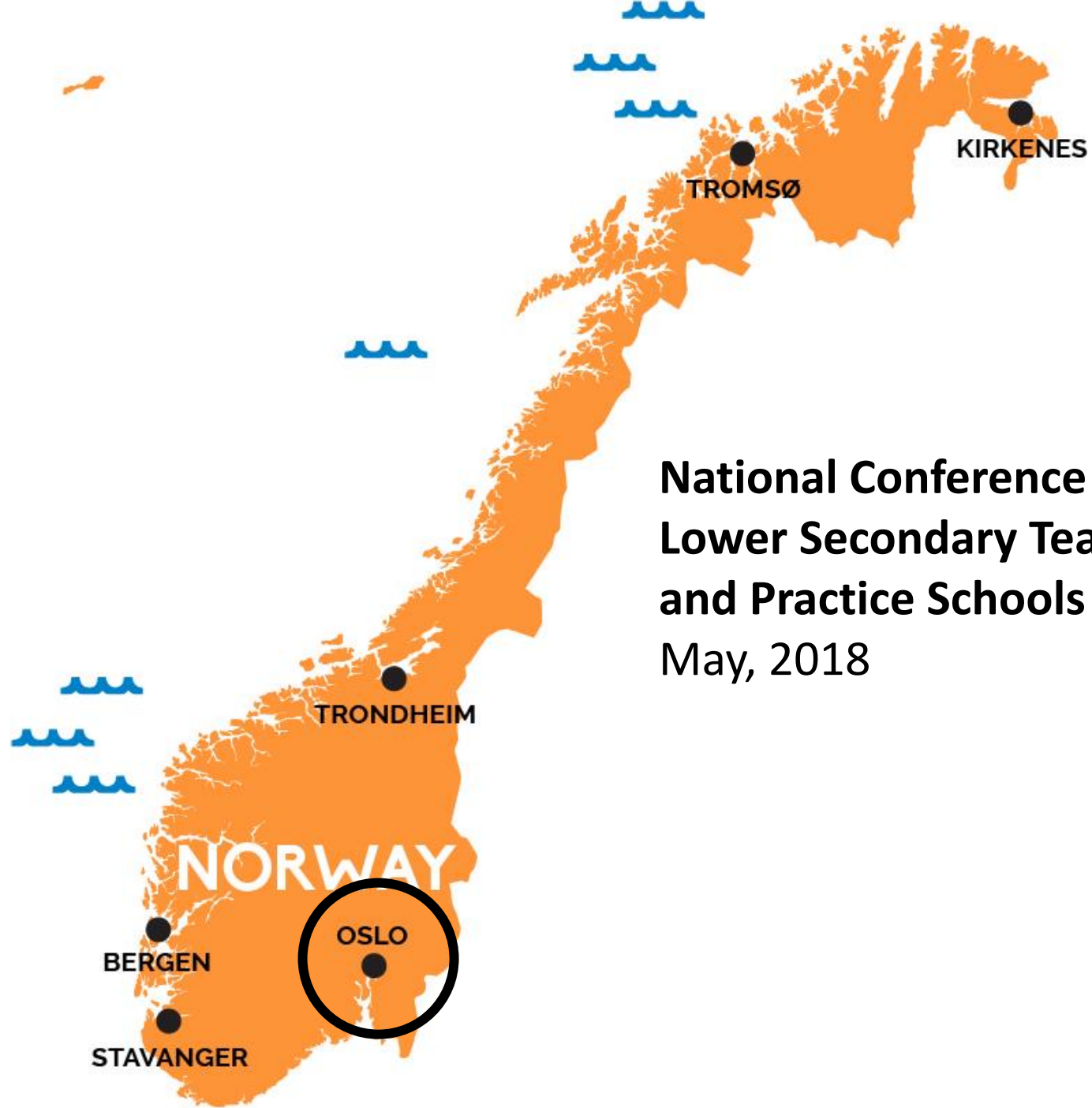


## **Regional Meetings on Primary and Lower Secondary Teacher Education and Practice Schools**

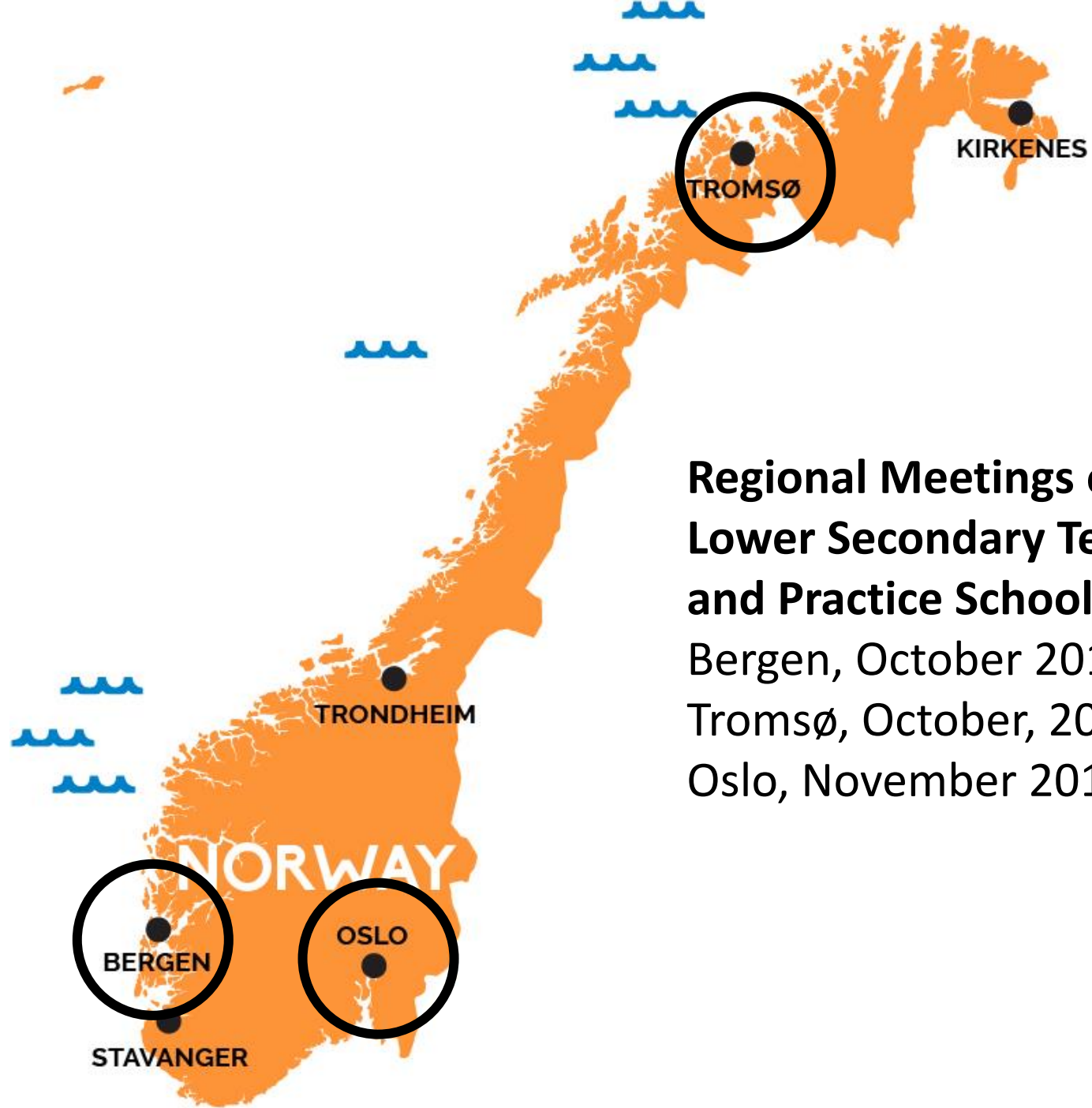
Bergen, October 2017

Tromsø, October/November, 2017

Drammen, December 2017



**National Conference on Primary and  
Lower Secondary Teacher Education  
and Practice Schools II**  
May, 2018

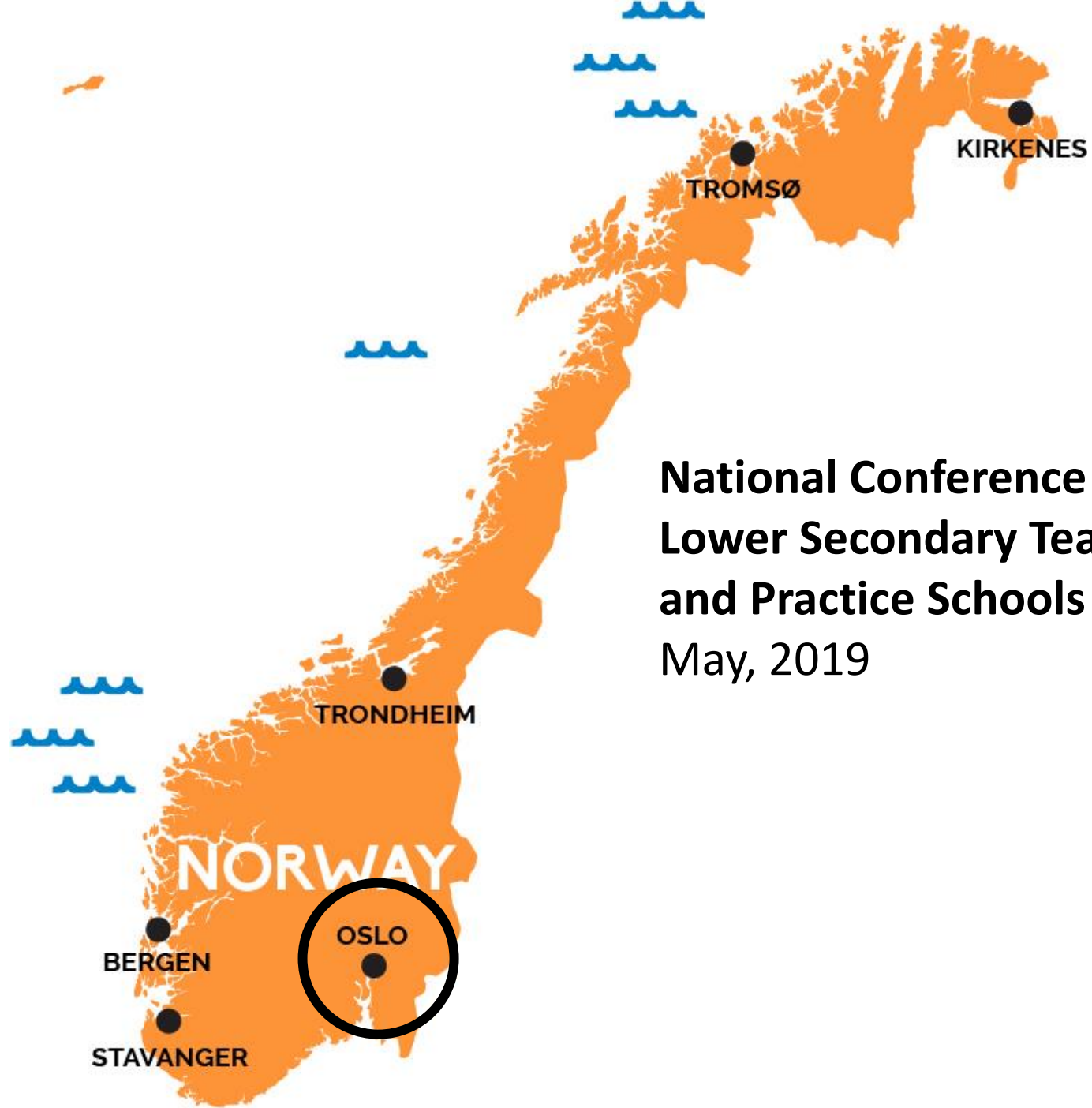


**Regional Meetings on Primary and Lower Secondary Teacher Education and Practice Schools**

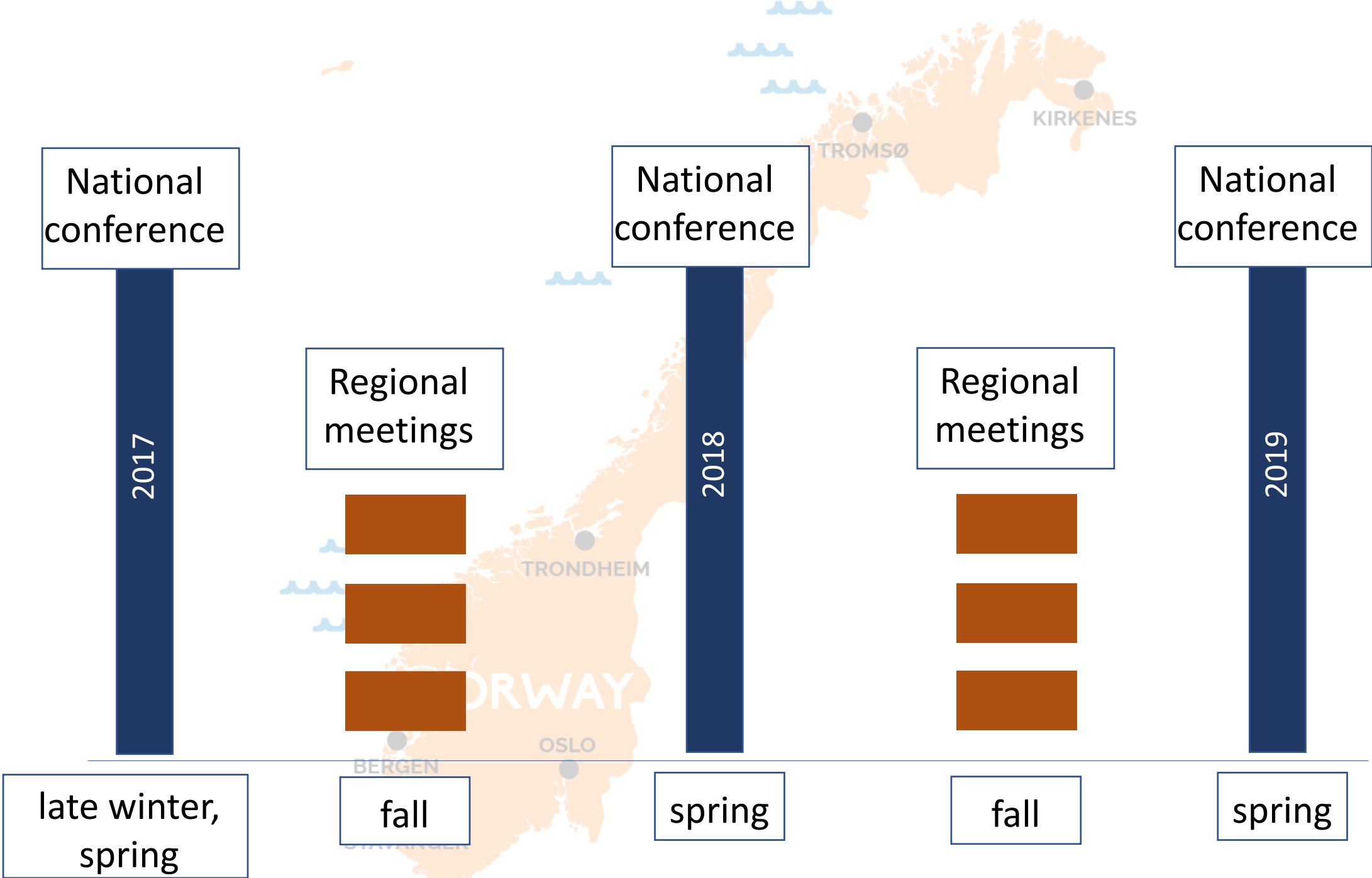
Bergen, October 2018

Tromsø, October, 2018

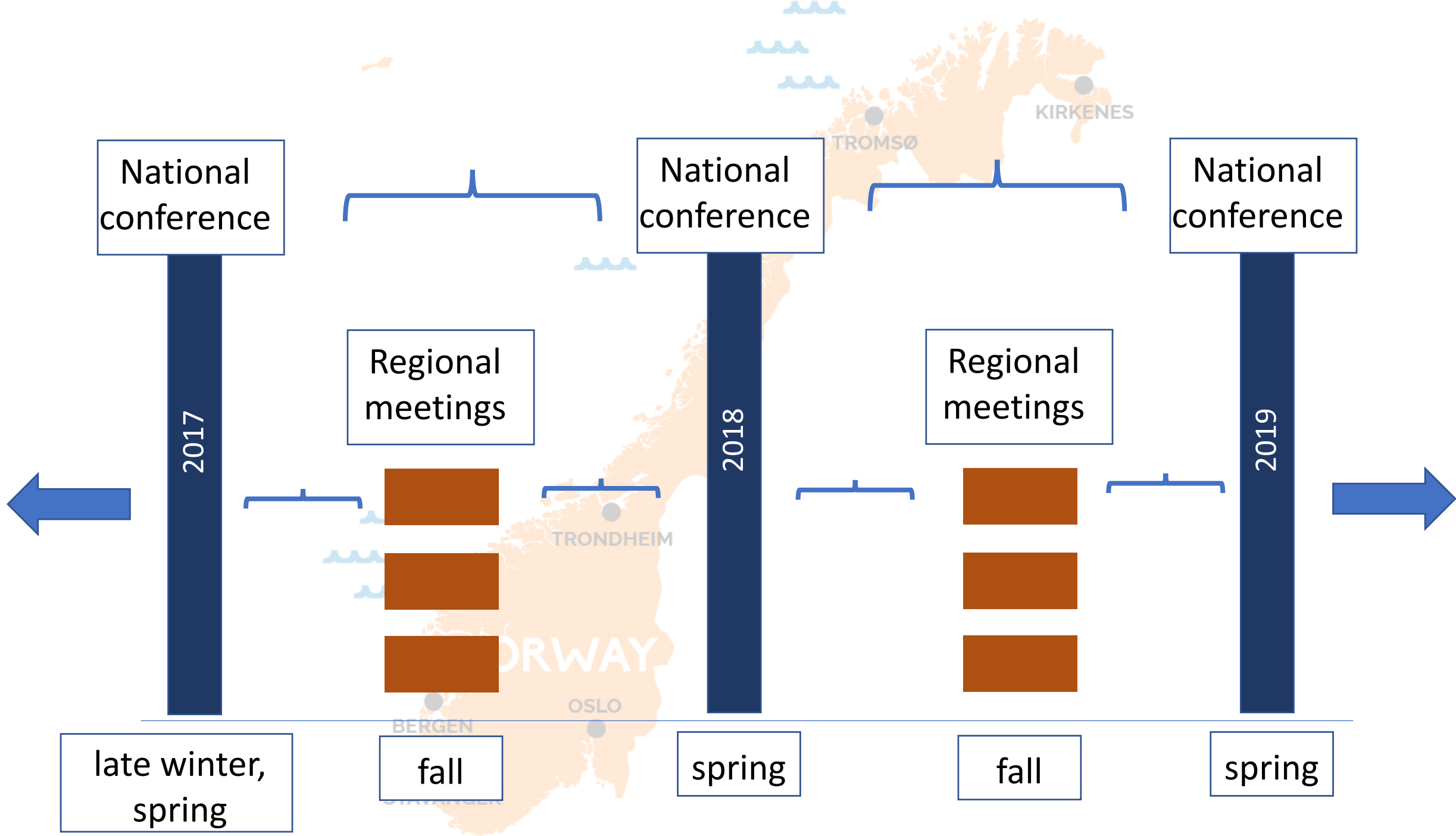
Oslo, November 2018



**National Conference on Primary and  
Lower Secondary Teacher Education  
and Practice Schools III**  
May, 2019







National conference

2017

late winter, spring



Regional meetings



fall

National conference

2018

spring



Regional meetings



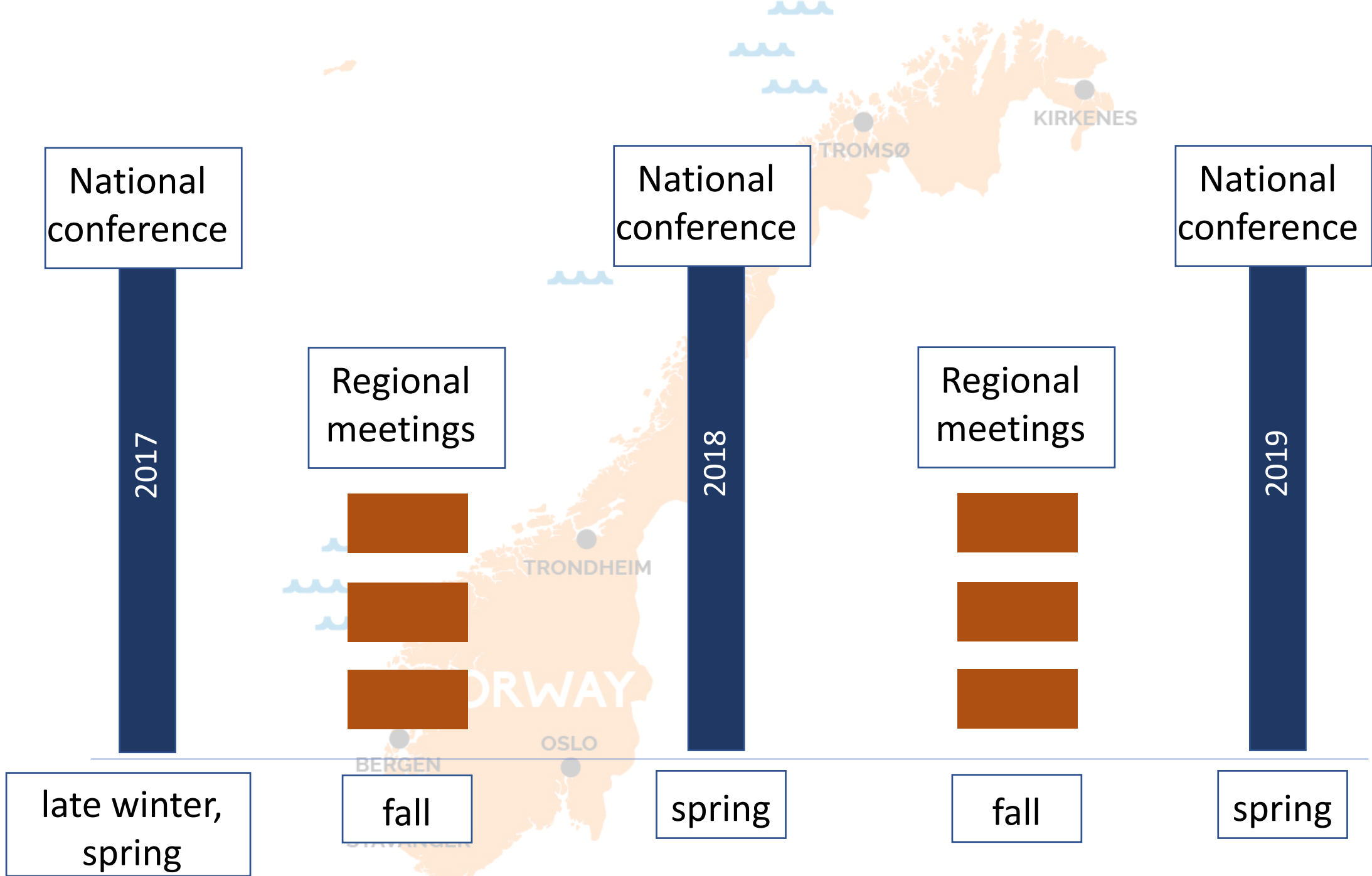
fall

National conference

2019

spring





the miraculous way



- participatory, collaborative
- inclusive
- agency/empowerment-oriented (rather than compliance-oriented)
- context-specific/local
- research-informed *and* practice-informed
- comparative (international)
- critical: identifying structural issues/  
resource needs/leverage points for change

# Frameworks/Workshops/Special Presentations

- locating Norwegian TE within larger international trends
- the MA reform in Norway/effects on schools
- unpacking Norwegian TE reform internationally
- making sense of innovative program designs, reforms
- rethinking school-TE partnerships
- connecting teaching practice and research
- enhancing the role of research in TE
- understanding practice-oriented studies
- the MA thesis: planning, supervision, assessment
- The Minister of Education
- Teacher candidates in the MA program



# Conversations/working groups/HEI presentations/roundtables/gallery walks

- enacting the MA reform (HEIs and school partners): where are we?
- promising practices/innovations/new approaches at each HEI/school partnership
- learning from the Tromsø pilot
- building TE programs collaboratively, school-based teacher educators
- building TE programs collaboratively, HEI-based teacher educators
- how HEIs and schools can work together to promote teacher and student learning
- how practice-oriented research is arranged: questions, data, analyses
- how practice-oriented research defines “practice”
- creating the conditions that support practice-oriented research in TE
- scaffolding teacher candidates’ thesis work



## Other Panel Activities

### **APT meetings with:**

Minister of Education and Ministry staff

Union of Education Norway leaders

Working committee for TE of Norwegian Universities

Council for TE 2025



### **APT White Paper on:**

staff composition

practice days

supervision



**Looking Forward**



## Looking Forward...

### Report of the Advisory Panel (in

- How we conceptualized our mandate and
- What we've done: a model, a set of fra
- What evidence we've gathered: intern
- What we've found: successes, innovati
- What remaining challenges we see
- What we recommend to: the Ministry,

- RECS to Ministry/NOKUT
- system of accountability
- partnerships
- practice days
- research capacity
- research on TE
- resources and funding
- sustainability/continuity





## Looking Forward...

### Report of the Advisory Panel (in

- How we conceptualized our mandate and
- What we've done: a model, a set of frameworks
- What evidence we've gathered: international and local
- What we've found: successes, innovations, and challenges
- What remaining challenges we see
- What we recommend to: the Ministry, HEIs, and schools

### RECS to HEIs/Schools

- practice days
- partnerships
- co-supervision
- thesis
- research integration
- teacher candidates as agents/researchers
- capacity building:  
teacher educators, teachers



**Looking Forward...**

## **Goals for the Conference**

the miraculous way



- participatory, collaborative
- inclusive
- agency/empowerment-oriented (rather than compliance-oriented)
- context-specific/local
- research-informed *and* practice-informed
- comparative (international)
- critical: identifying structural issues/  
resource needs/leverage points for change



**Looking Forward...**

## **Goals for the Conference**

- **Sharing progress (innovations, good ideas, initiatives *and* issues)**
- **Reflecting on the role/identity of *the teacher educator***
- **Focusing on *research and TE*: role and value? research as stance?**
- **Considering together what it will take to accomplish the goals of *Teacher Education, 2025***

